

FIRST LOOK! NICOLE RICHIE'S NEW FASHION COLLECTION

# FAMOUS

ONLY \$3.95



SHOCK NEW BODIES

# FIT & TONED OR TOO MUCH?

IT'S CALLED THE 'SUPERHERO', AND IT'S NOW THE MUST-HAVE BODY SHAPE IN HOLLYWOOD. BUT HAVE THESE STARS GONE TOO FAR?

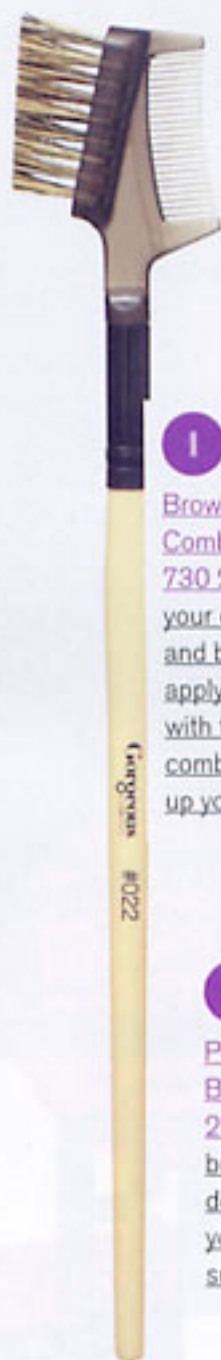
MAR 7, 2011  
AUST/PAZ \$3.95 (INC GST)  
Pacific magazine  
3.5  
9 313398 000141  
PP 255003/07904

**Ange's EMERGENCY SURGERY DRAMA**

From this...  
...to this  
**MIRANDA'S AMAZING BABY BODY SLIMDOWN!**

**NOT SHOWING & NOT EATING**  
Posh & Becks' BITTER PUBLIC FIGHT

**PLUS!**  
**BFFS AGAIN**  
Why Kim & Paris **KISSED & MADE UP**



**1 Gorgeous Cosmetics**

**Brow and Lash Comb, \$18 (1300 730 277).** Groom your eyelashes and brows before applying product with this dual comb to open up your face.

**Brushworx**

**Tourmaline Porcupine Paddle Brush, \$21.95 (1800 251 215).** This hair brush is perfect for detangling. Use while you blowdry for a smooth, tamed mane.



**2 Gorgeous Cosmetics**

**Pencil Sharpener, \$10 (1300 730 277).** This is no time to be blunt — sharpen up your eyeliners for precise, luscious lines.



**3 BaBylissPRO**

**Travel Mini Dryer, \$29.95 (1800 251 215).** Pop this mini hairdryer in your suitcase for sleek and shiny locks on the go.

**4 Artiste Professional Popping**

**Pink Duo Stippling + All Over Shadow Brush, \$24.95 (1800 651 146).** Avoid overdoing your make-up by using a foundation brush rather than a sponge or fingertips. This one doubles as an eyeshadow brush for perfect peepers.



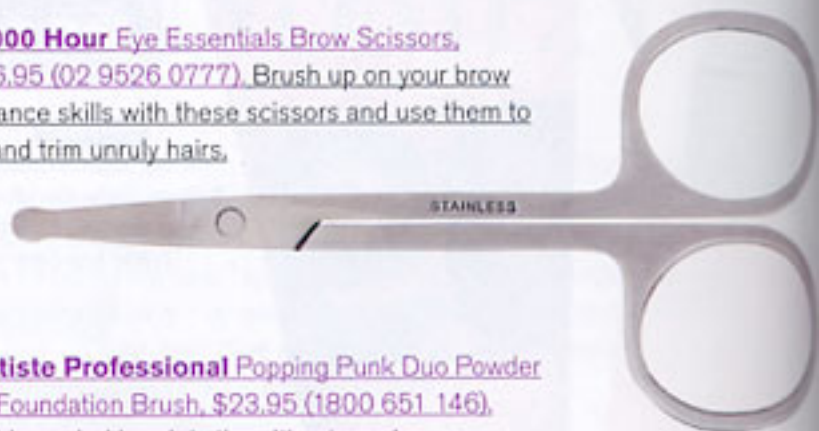
# 14 BEAUTY FIXES.



**6 Manicare**

**Eye Brow Tweezers, \$8.45 (1800 651 146).** Want to get perfect brows without breaking the bank? Give this baby a try!

**8 1000 Hour Eye Essentials Brow Scissors, \$6.95 (02 9526 0777).** Brush up on your brow maintenance skills with these scissors and use them to neaten and trim unruly hairs.



**7 Artiste Professional Popping**

**Pink Duo Powder + Foundation Brush, \$23.95 (1800 651 146).** This double-ended brush is the ultimate make-up applicator! Use the larger end for powder foundation and the smaller for liquid foundation, bronzer and blush.





**9** **Shu Uemura**  
Eyelash Curler, \$40 (02 9931 8888).  
Curled lashes give the effect of bigger, brighter eyes. Use this curler before applying mascara for lusciously long lashes.

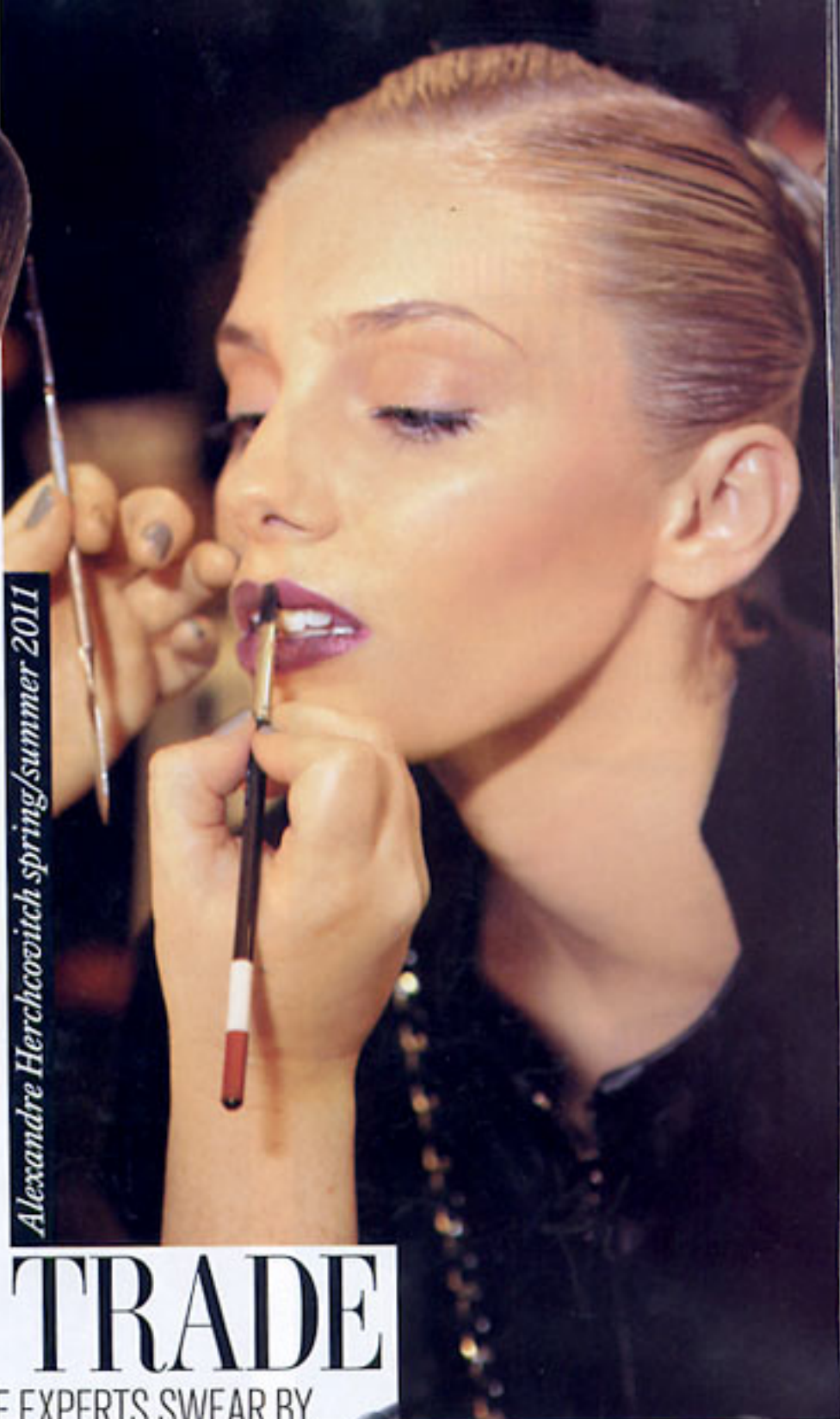
**10** **Elite Latex Synthetic Sponges**, \$4.95 for two (1800 181 040). Replace your old sponges with these super smooth ones.



**11** **Estée Lauder**  
Blush Brush, \$70 (1800 061 326). Larger blush brushes give the most natural, even finish. Treat yourself to this high quality brush for the perfect rosy glow.



Alexandre Herchcovitch spring/summer 2011



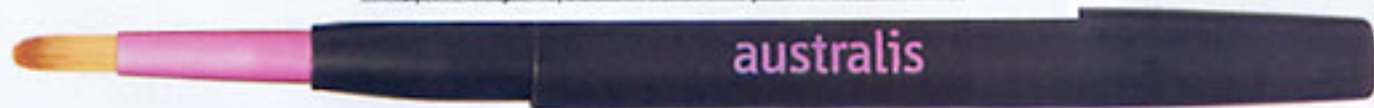
# TOOLS OF THE TRADE

PERFECT YOUR BEAUTY ROUTINE WITH PRODUCTS THE EXPERTS SWEAR BY.

**12** **BaBylissPRO XPT Ceramic Titanium Straightener**, \$209.95 (1800 251 215). Get smooth strands without flyaways with this ceramic straightener.



**13** **Australis Retractable Lip Brush**, \$7.95 (1300 650 981). Whether you're sporting a bold red lip or a nearly nude hue, perfect your pout with this nifty retractable brush.



**14** **Tweezerman For Benefit Slant Tweezers**, \$45 (02 8353 5000). These tweezers are designed to make grasping and plucking stray hairs a breeze!

